

BAYSHORE

AT CREEK BEACH

FLOOR PLANS BUILDING 4



EMAAR

DUBAI CREEK
HARBOUR

BAYSHORE AT
CREEK BEACH

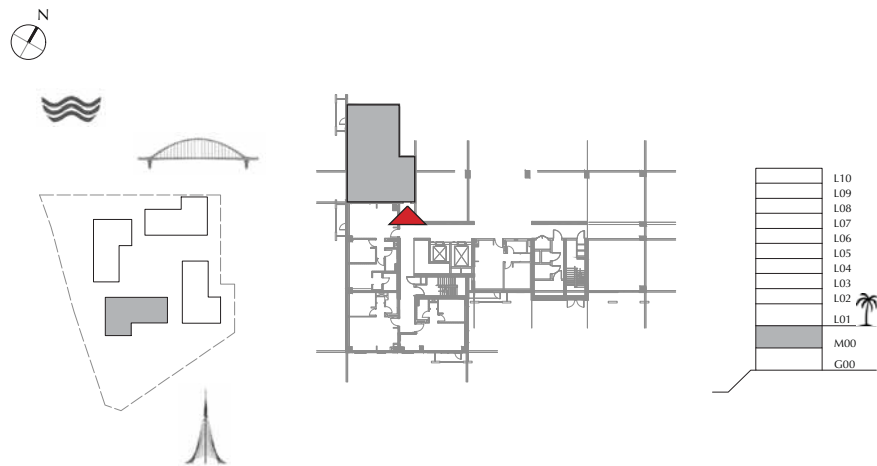
BUILDING 4

MEZZANINE LEVEL

UNIT M01

2 BED ROOM

APARTMENT AREA	91.04 SQ.M.	979.95 SQ.FT.
BALCONY AREA	20.02 SQ.M.	215.49 SQ.FT.
TOTAL AREA	111.06 SQ.M.	1195.44 SQ.FT.



DUBAI CREEK
HARBOUR

BAYSHORE AT
CREEK BEACH

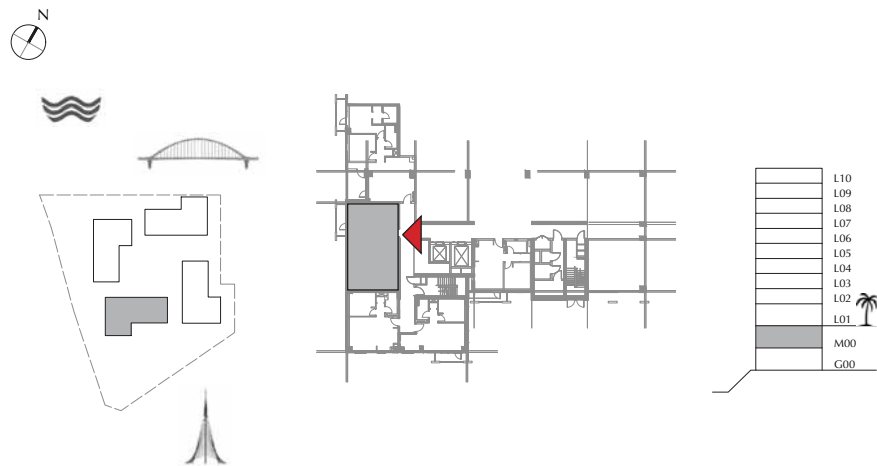
BUILDING 4

MEZZANINE LEVEL

UNIT M02

2 BED ROOM

APARTMENT AREA	83.79 SQ.M.	901.91 SQ.FT.
BALCONY AREA	6.01 SQ.M.	64.69 SQ.FT.
TOTAL AREA	89.80 SQ.M.	966.60 SQ.FT.



FLOORPLAN 1. All dimensions are in imperial and metric, and measured from finish to finish excluding construction tolerances. 2.All materials, dimensions, and drawings are approximate only. 3. Information is subject to change without notice, at developer's absolute discretion. 4. Actual area may vary from the stated area. 5. Drawings not to scale. 6. All images used are for illustrative purpose only and do not represent the actual size, features, specifications, fittings, and furnishings. 7. The developer reserves the right to make revisions / alterations, at it's a absolute discretion, without any liability whatsoever.

DUBAI CREEK
HARBOUR

BAYSHORE AT
CREEK BEACH

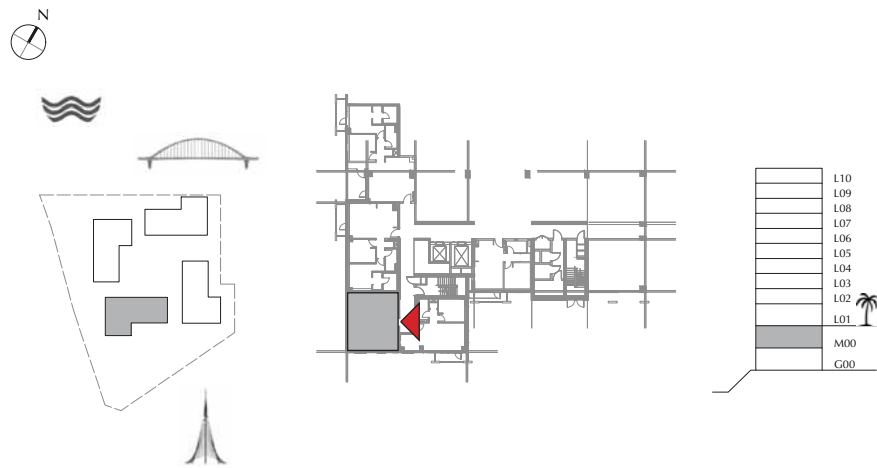
BUILDING 4

MEZZANINE LEVEL

UNIT M03

1 BED ROOM

APARTMENT AREA	55.51 SQ.M.	597.50 SQ.FT.
BALCONY AREA	00.00 SQ.M.	00.00 SQ.FT.
TOTAL AREA	55.51 SQ.M.	597.50 SQ.FT.



FLOORPLAN 1. All dimensions are in imperial and metric, and measured from finish to finish excluding construction tolerances. 2.All materials, dimensions, and drawings are approximate only. 3. Information is subject to change without notice, at developer's absolute discretion. 4. Actual area may vary from the stated area. 5. Drawings not to scale. 6. All images used are for illustrative purpose only and do not represent the actual size, features, specifications, fittings, and furnishings. 7. The developer reserves the right to make revisions / alterations, at it's a absolute discretion, without any liability whatsoever.

DUBAI CREEK
HARBOUR

BAYSHORE AT
CREEK BEACH

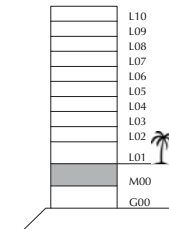
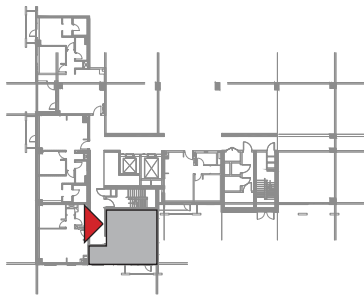
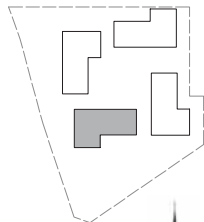
BUILDING 4

MEZZANINE LEVEL

UNIT M04

1 BEDROOM

APARTMENT AREA	56.19 SQ.M.	604.82 SQ.FT.
BALCONY AREA	6.02 SQ.M.	64.80 SQ.FT.
TOTAL AREA	62.21 SQ.M.	669.62 SQ.FT.



FLOORPLAN 1. All dimensions are in imperial and metric, and measured from finish to finish excluding construction tolerances. 2.All materials, dimensions, and drawings are approximate only. 3. Information is subject to change without notice, at developer's absolute discretion. 4. Actual area may vary from the stated area. 5. Drawings not to scale. 6. All images used are for illustrative purpose only and do not represent the actual size, features, specifications, fittings, and furnishings. 7. The developer reserves the right to make revisions / alterations, at it's a absolute discretion, without any liability whatsoever.

EMAAR

DUBAI CREEK
HARBOUR

BAYSHORE AT
CREEK BEACH

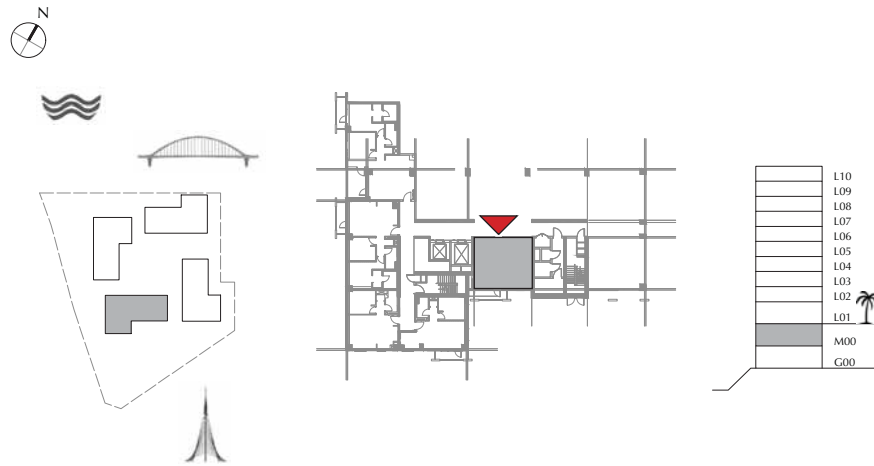
BUILDING 4

MEZZANINE LEVEL

UNIT M05

1 BEDROOM

APARTMENT AREA	55.57 SQ.M.	598.15 SQ.FT.
BALCONY AREA	7.47 SQ.M.	80.41 SQ.FT.
TOTAL AREA	63.04 SQ.M.	678.56 SQ.FT.



FLOORPLAN 1. All dimensions are in imperial and metric, and measured from finish to finish excluding construction tolerances. 2.All materials, dimensions, and drawings are approximate only. 3. Information is subject to change without notice, at developer's absolute discretion. 4. Actual area may vary from the stated area. 5. Drawings not to scale. 6. All images used are for illustrative purpose only and do not represent the actual size, features, specifications, fittings, and furnishings. 7. The developer reserves the right to make revisions / alterations, at it's a absolute discretion, without any liability whatsoever.

DUBAI CREEK
HARBOUR

BAYSHORE AT
CREEK BEACH

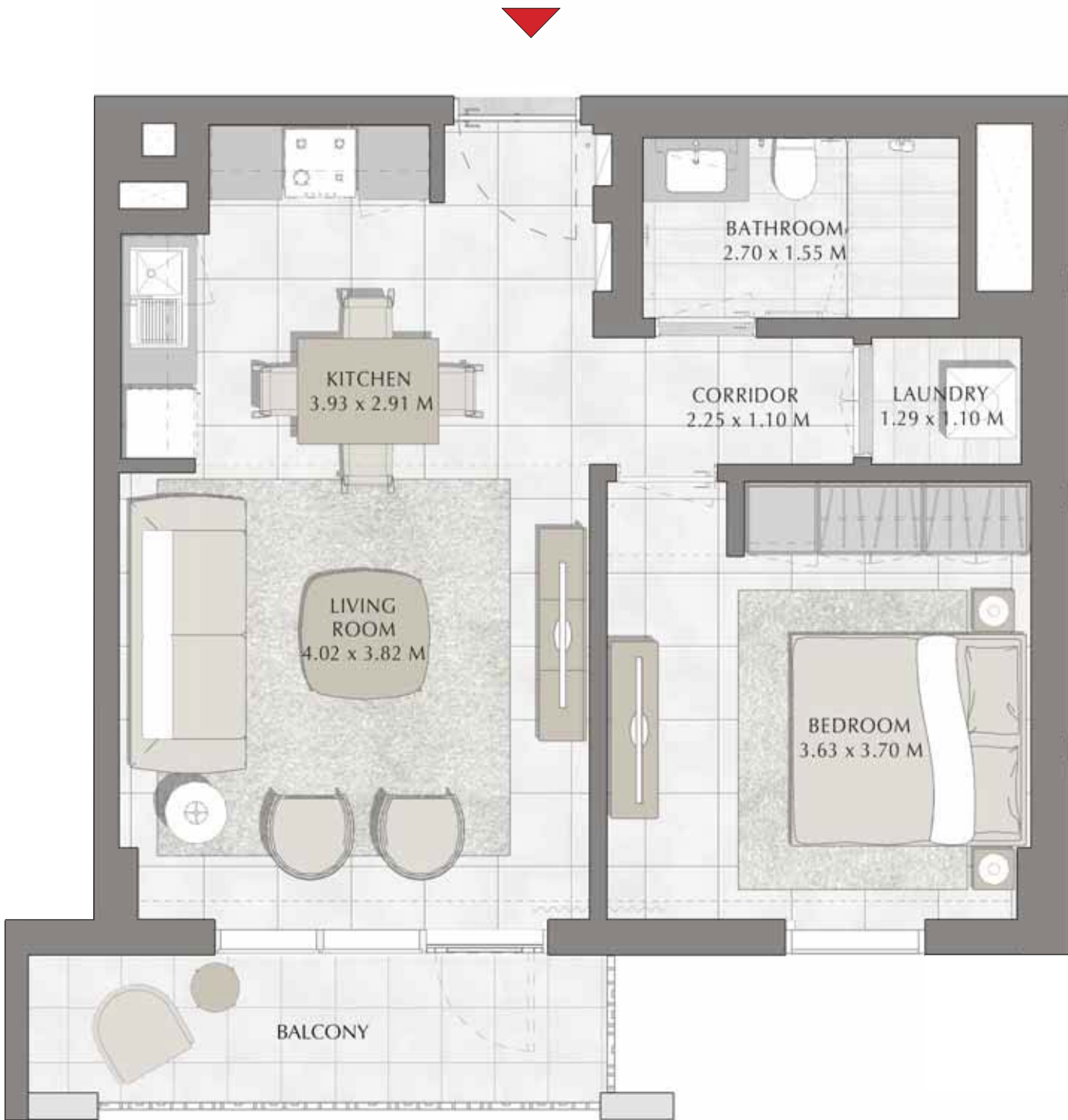
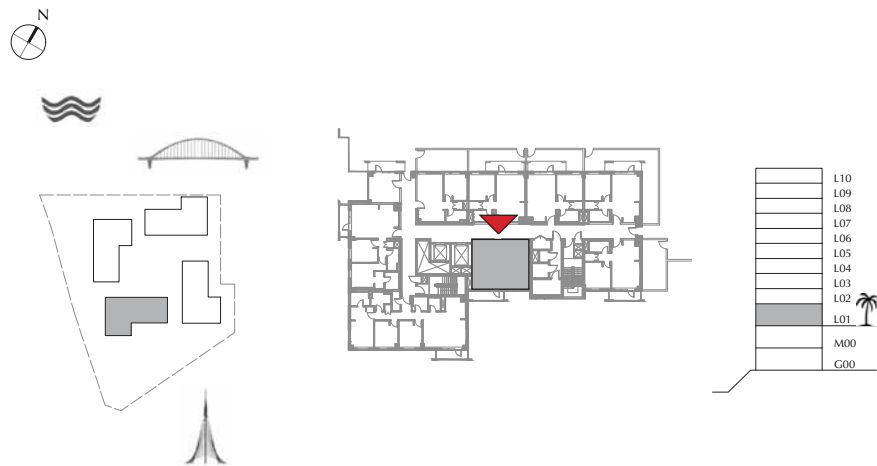
BUILDING 4

LEVEL 1

UNIT 101

1 BEDROOM

APARTMENT AREA	55.42 SQ.M.	596.54 SQ.FT.
BALCONY AREA	7.18 SQ.M.	77.28 SQ.FT.
TOTAL AREA	62.60 SQ.M.	673.82 SQ.FT.



FLOORPLAN 1. All dimensions are in imperial and metric, and measured from finish to finish excluding construction tolerances. 2.All materials, dimensions, and drawings are approximate only. 3. Information is subject to change without notice, at developer's absolute discretion. 4. Actual area may vary from the stated area. 5. Drawings not to scale. 6. All images used are for illustrative purpose only and do not represent the actual size, features, specifications, fittings, and furnishings. 7. The developer reserves the right to make revisions / alterations, at it's a absolute discretion, without any liability whatsoever.

DUBAI CREEK
HARBOUR

BAYSHORE AT
CREEK BEACH

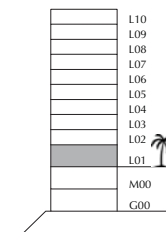
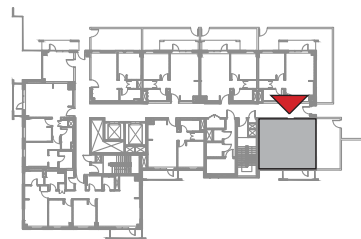
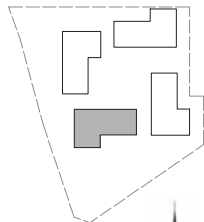
BUILDING 4

LEVEL 1

UNIT 102

1 BED ROOM

APARTMENT AREA	54.88 SQ.M.	590.72 SQ.FT.
BALCONY AREA	31.16 SQ.M.	335.40 SQ.FT.
TOTAL AREA	86.04 SQ.M.	926.12 SQ.FT.



FLOORPLAN 1. All dimensions are in imperial and metric, and measured from finish to finish excluding construction tolerances. 2.All materials, dimensions, and drawings are approximate only. 3. Information is subject to change without notice, at developer's absolute discretion. 4. Actual area may vary from the stated area. 5. Drawings not to scale. 6. All images used are for illustrative purpose only and do not represent the actual size, features, specifications, fittings, and furnishings. 7. The developer reserves the right to make revisions / alterations, at it's a absolute discretion, without any liability whatsoever.

DUBAI CREEK
HARBOUR

BAYSHORE AT
CREEK BEACH

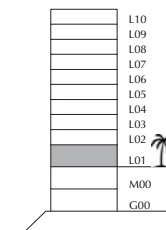
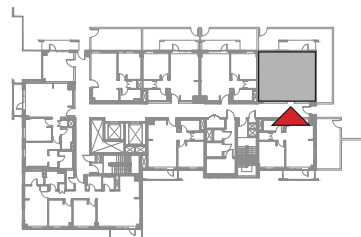
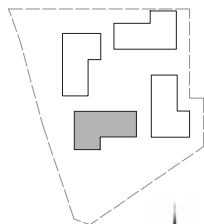
BUILDING 4

LEVEL 1

UNIT 103

1 BEDROOM

APARTMENT AREA	54.47 SQ.M.	586.31 SQ.FT.
BALCONY AREA	50.85 SQ.M.	547.34 SQ.FT.
TOTAL AREA	105.32 SQ.M.	1133.65 SQ.FT.



FLOORPLAN 1. All dimensions are in imperial and metric, and measured from finish to finish excluding construction tolerances. 2.All materials, dimensions, and drawings are approximate only. 3. Information is subject to change without notice, at developer's absolute discretion. 4. Actual area may vary from the stated area. 5. Drawings not to scale. 6. All images used are for illustrative purpose only and do not represent the actual size, features, specifications, fittings, and furnishings. 7. The developer reserves the right to make revisions / alterations, at it's a absolute discretion, without any liability whatsoever.

DUBAI CREEK
HARBOUR

BAYSHORE AT
CREEK BEACH

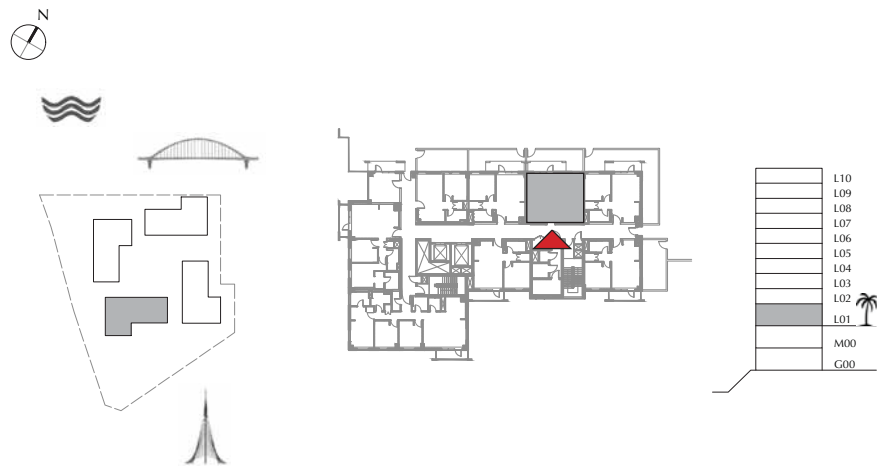
BUILDING 4

LEVEL 1

UNIT 104

1 BEDROOM

APARTMENT AREA	55.08 SQ.M.	592.88 SQ.FT.
BALCONY AREA	25.37 SQ.M.	273.08 SQ.FT.
TOTAL AREA	80.45 SQ.M.	865.96 SQ.FT.



FLOORPLAN 1. All dimensions are in imperial and metric, and measured from finish to finish excluding construction tolerances. 2.All materials, dimensions, and drawings are approximate only. 3. Information is subject to change without notice, at developer's absolute discretion. 4. Actual area may vary from the stated area. 5. Drawings not to scale. 6. All images used are for illustrative purpose only and do not represent the actual size, features, specifications, fittings, and furnishings. 7. The developer reserves the right to make revisions / alterations, at it's a absolute discretion, without any liability whatsoever.

DUBAI CREEK
HARBOUR

BAYSHORE AT
CREEK BEACH

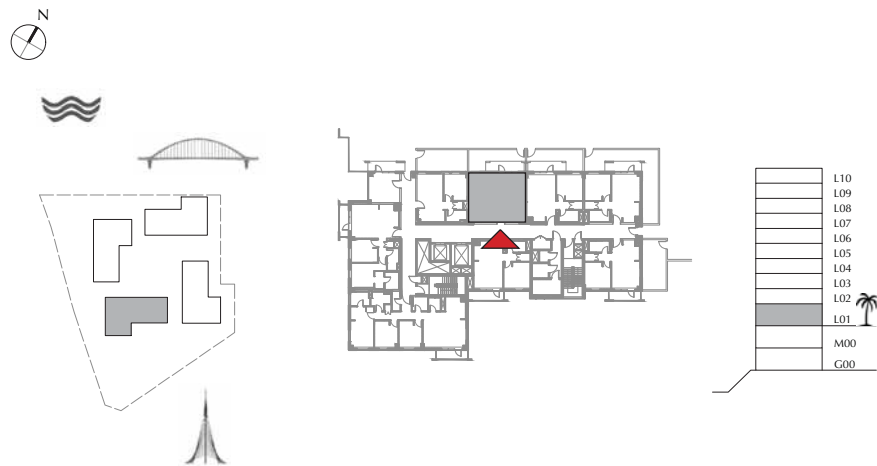
BUILDING 4

LEVEL 1

UNIT 105

1 BED ROOM

APARTMENT AREA	54.92 SQ.M.	591.15 SQ.FT.
BALCONY AREA	25.37 SQ.M.	273.08 SQ.FT.
TOTAL AREA	80.29 SQ.M.	864.23 SQ.FT.



FLOORPLAN 1. All dimensions are in imperial and metric, and measured from finish to finish excluding construction tolerances. 2.All materials, dimensions, and drawings are approximate only. 3. Information is subject to change without notice, at developer's absolute discretion. 4. Actual area may vary from the stated area. 5. Drawings not to scale. 6. All images used are for illustrative purpose only and do not represent the actual size, features, specifications, fittings, and furnishings. 7. The developer reserves the right to make revisions / alterations, at it's a absolute discretion, without any liability whatsoever.

DUBAI CREEK
HARBOUR

BAYSHORE AT
CREEK BEACH

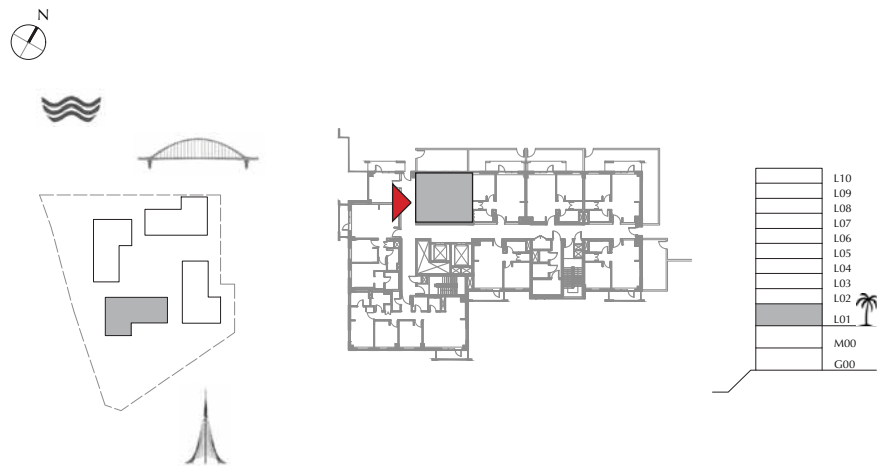
BUILDING 4

LEVEL 1

UNIT 106

1 BEDROOM

APARTMENT AREA	49.17 SQ.M.	529.26 SQ.FT.
BALCONY AREA	22.94 SQ.M.	246.92 SQ.FT.
TOTAL AREA	72.11 SQ.M.	776.18 SQ.FT.



FLOORPLAN 1. All dimensions are in imperial and metric, and measured from finish to finish excluding construction tolerances. 2.All materials, dimensions, and drawings are approximate only. 3. Information is subject to change without notice, at developer's absolute discretion. 4. Actual area may vary from the stated area. 5. Drawings not to scale. 6. All images used are for illustrative purpose only and do not represent the actual size, features, specifications, fittings, and furnishings. 7. The developer reserves the right to make revisions / alterations, at it's a absolute discretion, without any liability whatsoever.

DUBAI CREEK
HARBOUR

BAYSHORE AT
CREEK BEACH

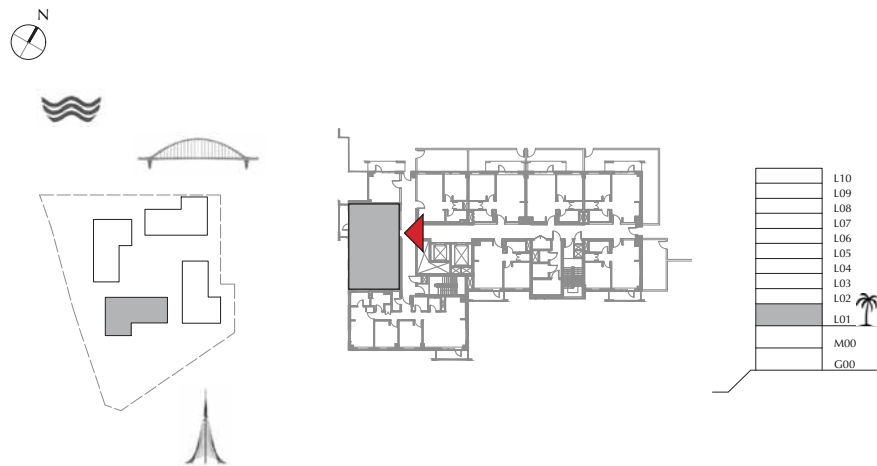
BUILDING 4

LEVEL 1

UNIT 107

2 BED ROOM

APARTMENT AREA	83.47 SQ.M.	898.46 SQ.FT.
BALCONY AREA	6.10 SQ.M.	65.66 SQ.FT.
TOTAL AREA	89.57 SQ.M.	964.12 SQ.FT.



FLOORPLAN 1. All dimensions are in imperial and metric, and measured from finish to finish excluding construction tolerances. 2.All materials, dimensions, and drawings are approximate only. 3. Information is subject to change without notice, at developer's absolute discretion. 4. Actual area may vary from the stated area. 5. Drawings not to scale. 6. All images used are for illustrative purpose only and do not represent the actual size, features, specifications, fittings, and furnishings. 7. The developer reserves the right to make revisions / alterations, at it's a absolute discretion, without any liability whatsoever.

DUBAI CREEK
HARBOUR

BAYSHORE AT
CREEK BEACH

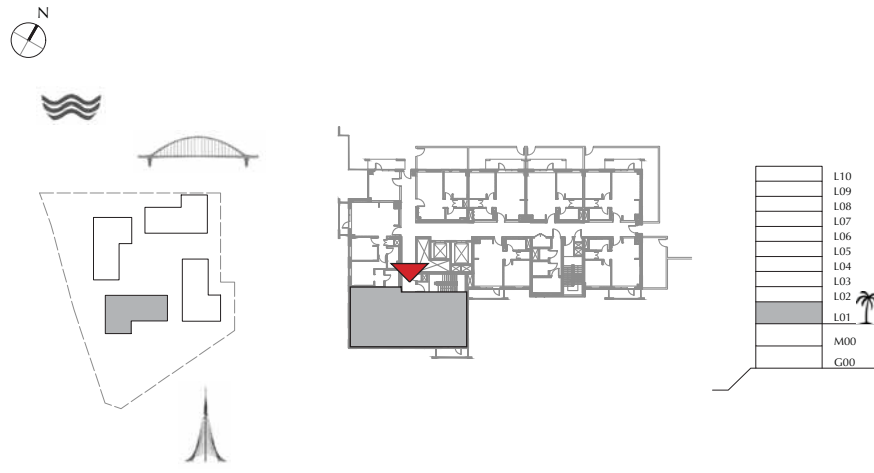
BUILDING 4

LEVEL 1

UNIT 108

3 BED ROOM

APARTMENT AREA	123.43 SQ.M.	1328.59 SQ.FT.
BALCONY AREA	6.01 SQ.M.	64.69 SQ.FT.
TOTAL AREA	129.44 SQ.M.	1393.28 SQ.FT.



FLOORPLAN 1. All dimensions are in imperial and metric, and measured from finish to finish excluding construction tolerances. 2.All materials, dimensions, and drawings are approximate only. 3. Information is subject to change without notice, at developer's absolute discretion. 4. Actual area may vary from the stated area. 5. Drawings not to scale. 6. All images used are for illustrative purpose only and do not represent the actual size, features, specifications, fittings, and furnishings. 7. The developer reserves the right to make revisions / alterations, at it's a absolute discretion, without any liability whatsoever.

DUBAI CREEK
HARBOUR

BAYSHORE AT
CREEK BEACH

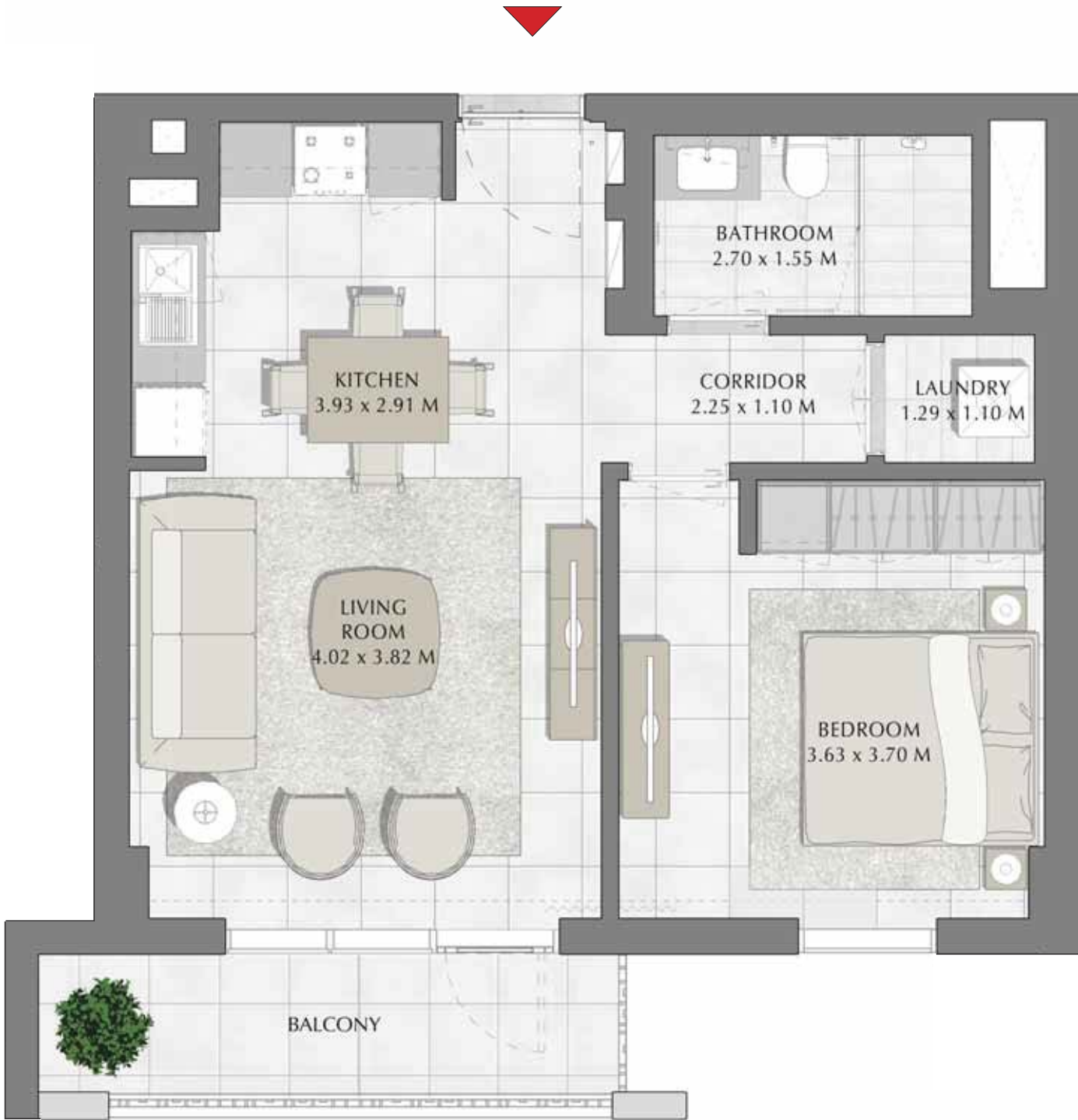
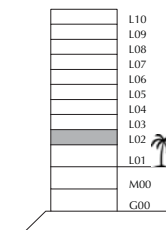
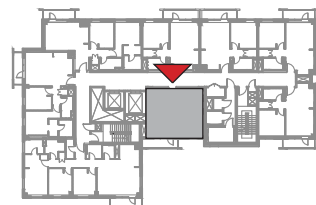
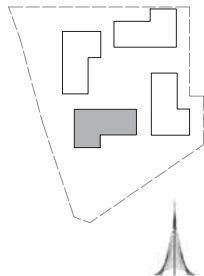
BUILDING 4

LEVEL 2

UNIT 201

1 BEDROOM

APARTMENT AREA	55.42 SQ.M.	596.54 SQ.FT.
BALCONY AREA	7.07 SQ.M.	76.10 SQ.FT.
TOTAL AREA	62.49 SQ.M.	672.64 SQ.FT.



FLOORPLAN 1. All dimensions are in imperial and metric, and measured from finish to finish excluding construction tolerances. 2.All materials, dimensions, and drawings are approximate only. 3. Information is subject to change without notice, at developer's absolute discretion. 4. Actual area may vary from the stated area. 5. Drawings not to scale. 6. All images used are for illustrative purpose only and do not represent the actual size, features, specifications, fittings, and furnishings. 7. The developer reserves the right to make revisions/ alterations, at it's a absolute discretion, without any liability whatsoever.

DUBAI CREEK
HARBOUR

BAYSHORE AT
CREEK BEACH

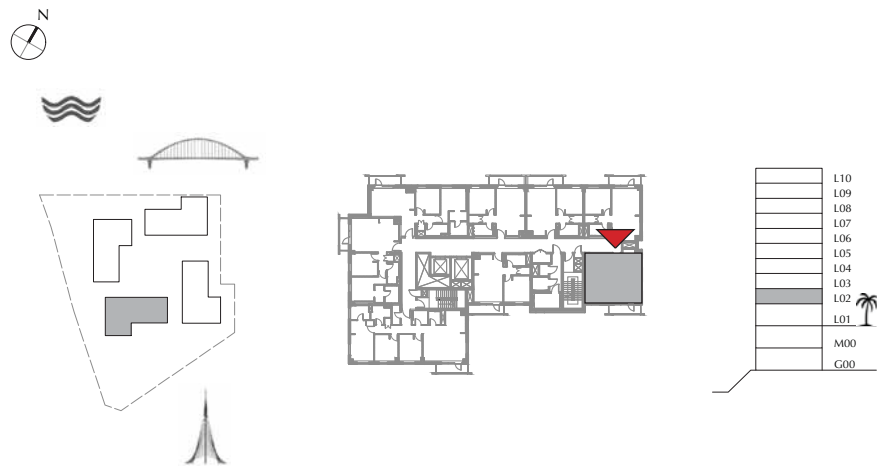
BUILDING 4

LEVEL 2

UNIT 202

1 BEDROOM

APARTMENT AREA	57.00 SQ.M.	613.54 SQ.FT.
BALCONY AREA	6.01 SQ.M.	64.69 SQ.FT.
TOTAL AREA	63.01 SQ.M.	678.23 SQ.FT.



FLOORPLAN 1. All dimensions are in imperial and metric, and measured from finish to finish excluding construction tolerances. 2.All materials, dimensions, and drawings are approximate only. 3. Information is subject to change without notice, at developer's absolute discretion. 4. Actual area may vary from the stated area. 5. Drawings not to scale. 6. All images used are for illustrative purpose only and do not represent the actual size, features, specifications, fittings, and furnishings. 7. The developer reserves the right to make revisions / alterations, at it's a absolute discretion, without any liability whatsoever.

DUBAI CREEK
HARBOUR

BAYSHORE AT
CREEK BEACH

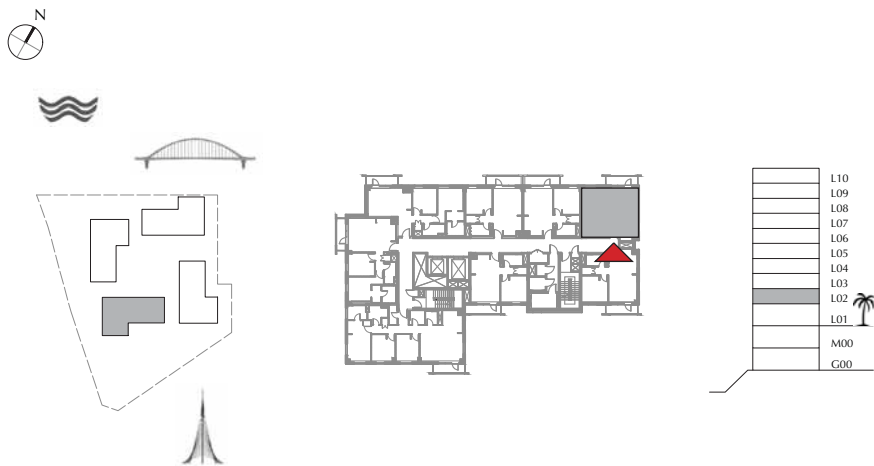
BUILDING 4

LEVEL 2

UNIT 203

1 BEDROOM

APARTMENT AREA	56.60 SQ.M.	609.24 SQ.FT.
BALCONY AREA	6.01 SQ.M.	64.69 SQ.FT.
TOTAL AREA	62.61 SQ.M.	673.93 SQ.FT.



FLOORPLAN 1. All dimensions are in imperial and metric, and measured from finish to finish excluding construction tolerances. 2.All materials, dimensions, and drawings are approximate only. 3. Information is subject to change without notice, at developer's absolute discretion. 4. Actual area may vary from the stated area. 5. Drawings not to scale. 6. All images used are for illustrative purpose only and do not represent the actual size, features, specifications, fittings, and furnishings. 7. The developer reserves the right to make revisions / alterations, at it's a absolute discretion, without any liability whatsoever.

DUBAI CREEK
HARBOUR

BAYSHORE AT
CREEK BEACH

BUILDING 4

LEVEL 2

UNIT 204

1 BEDROOM

APARTMENT AREA	55.10 SQ.M.	593.09 SQ.FT.
BALCONY AREA	6.78 SQ.M.	72.98 SQ.FT.
TOTAL AREA	61.88 SQ.M.	666.07 SQ.FT.



FLOORPLAN 1. All dimensions are in imperial and metric, and measured from finish to finish excluding construction tolerances. 2.All materials, dimensions, and drawings are approximate only. 3. Information is subject to change without notice, at developer's absolute discretion. 4. Actual area may vary from the stated area. 5. Drawings not to scale. 6. All images used are for illustrative purpose only and do not represent the actual size, features, specifications, fittings, and furnishings. 7. The developer reserves the right to make revisions / alterations, at it's a absolute discretion, without any liability whatsoever.

DUBAI CREEK
HARBOUR

BAYSHORE AT
CREEK BEACH

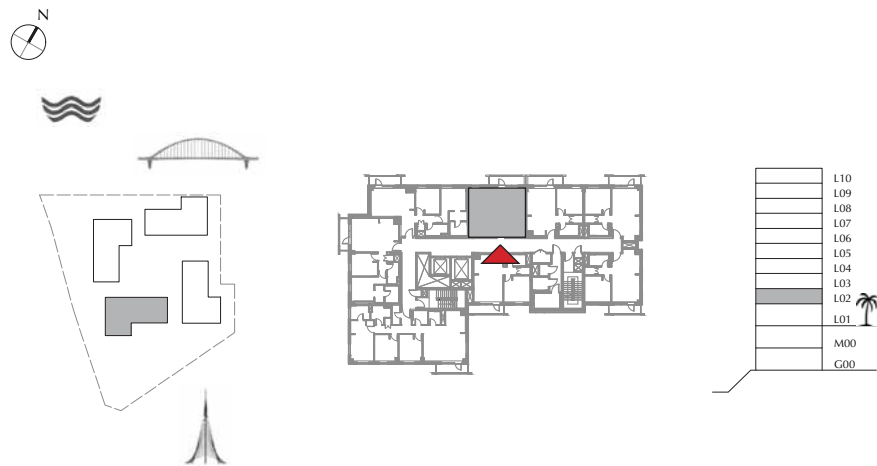
BUILDING 4

LEVEL 2

UNIT 205

1 BED ROOM

APARTMENT AREA	54.95 SQ.M.	591.48 SQ.FT.
BALCONY AREA	6.78 SQ.M.	72.98 SQ.FT.
TOTAL AREA	61.73 SQ.M.	664.46 SQ.FT.



FLOORPLAN 1. All dimensions are in imperial and metric, and measured from finish to finish excluding construction tolerances. 2.All materials, dimensions, and drawings are approximate only. 3. Information is subject to change without notice, at developer's absolute discretion. 4. Actual area may vary from the stated area. 5. Drawings not to scale. 6. All images used are for illustrative purpose only and do not represent the actual size, features, specifications, fittings, and furnishings. 7. The developer reserves the right to make revisions / alterations, at it's a absolute discretion, without any liability whatsoever.

DUBAI CREEK
HARBOUR

BAYSHORE AT
CREEK BEACH

BUILDING 4

LEVEL 2

UNIT 206

2 BED ROOM

APARTMENT AREA	82.60 SQ.M.	889.10 SQ.FT.
BALCONY AREA	6.01 SQ.M.	64.69 SQ.FT.
TOTAL AREA	88.61 SQ.M.	953.79 SQ.FT.



FLOORPLAN 1. All dimensions are in imperial and metric, and measured from finish to finish excluding construction tolerances. 2.All materials, dimensions, and drawings are approximate only. 3. Information is subject to change without notice, at developer's absolute discretion. 4. Actual area may vary from the stated area. 5. Drawings not to scale. 6. All images used are for illustrative purpose only and do not represent the actual size, features, specifications, fittings, and furnishings. 7. The developer reserves the right to make revisions / alterations, at it's a absolute discretion, without any liability whatsoever.

DUBAI CREEK
HARBOUR

BAYSHORE AT
CREEK BEACH

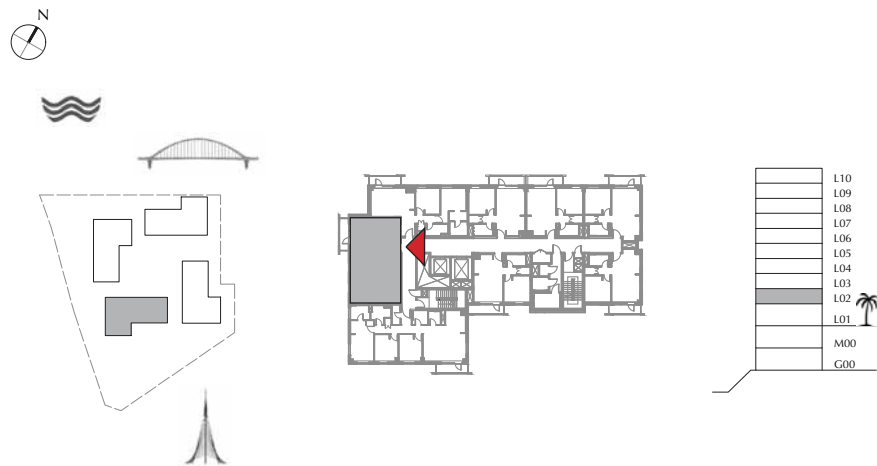
BUILDING 4

LEVEL 2

UNIT 207

2 BED ROOM

APARTMENT AREA	83.48 SQ.M.	898.57 SQ.FT.
BALCONY AREA	6.01 SQ.M.	64.69 SQ.FT.
TOTAL AREA	89.49 SQ.M.	963.26 SQ.FT.



FLOORPLAN 1. All dimensions are in imperial and metric, and measured from finish to finish excluding construction tolerances. 2.All materials, dimensions, and drawings are approximate only. 3. Information is subject to change without notice, at developer's absolute discretion. 4. Actual area may vary from the stated area. 5. Drawings not to scale. 6. All images used are for illustrative purpose only and do not represent the actual size, features, specifications, fittings, and furnishings. 7. The developer reserves the right to make revisions / alterations, at it's a absolute discretion, without any liability whatsoever.

DUBAI CREEK
HARBOUR

BAYSHORE AT
CREEK BEACH

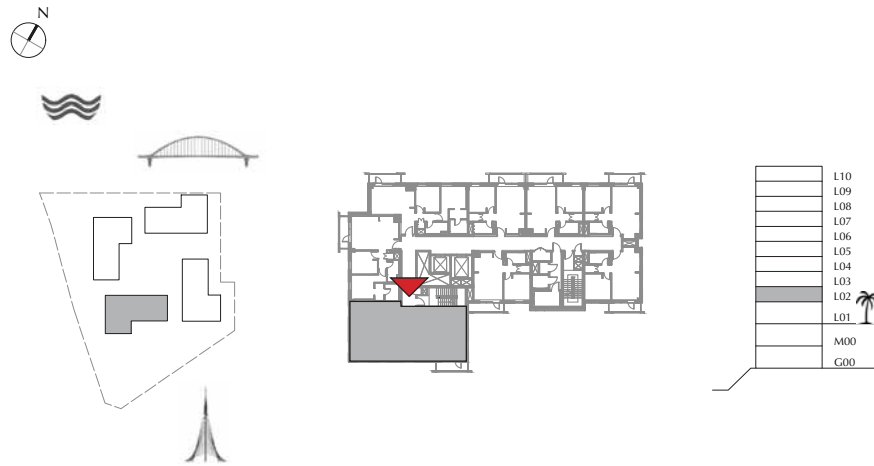
BUILDING 4

LEVEL 2

UNIT 208

3 BED ROOM

APARTMENT AREA	123.69 SQ.M.	1331.39 SQ.FT.
BALCONY AREA	6.01 SQ.M.	64.69 SQ.FT.
TOTAL AREA	129.70 SQ.M.	1396.08 SQ.FT.







FLOORPLAN 1. All dimensions are in imperial and metric, and measured from finish to finish excluding construction tolerances. 2.All materials, dimensions, and drawings are approximate only. 3. Information is subject to change without notice, at developer's absolute discretion. 4. Actual area may vary from the stated area. 5. Drawings not to scale. 6. All images used are for illustrative purpose only and do not represent the actual size, features, specifications, fittings, and furnishings. 7. The developer reserves the right to make revisions / alterations, at it's a absolute discretion, without any liability whatsoever.

BAYSHORE

AT CREEK BEACH

FOR MORE INFORMATION PLEASE CONTACT



 +971 55 476 7630
 +971 4 368 7878
 info@afsrealestate.com
 www.afsrealestate.com



 +971 50 674 2020
 +971 4 368 7878
 info@dubricks.com
 www.dubricks.com

EMAAR